

ADS

AIRBORNE DISINFECTION SYSTEM



The Fresh-Aire UV Air Disinfection System (ADS) delivers exceptional single-pass airborne inactivation of dangerous pathogens such as viruses, bacteria, and mold. Installed parallel to the airstream, the versatile and flexible design of ADS delivers unparalleled disinfection rates by maximizing exposure time with the air. The modular design allows from 2 to 6 high-output UV-C lamps up to 60" in length*. Optional features such as our LED control center with UV sensors, BMS integration and real-time lamp monitoring guarantees the most cost-effective, sophisticated UVGI air disinfection system available.

*Sized according to CFM, duct size, air recirculation rates & target for inactivation.

FEATURES

- Choose Grid or Axial configuration for optimal performance
- System features 2-6 high-output 2 year UV-C lamps
- Available lamp lengths: 18", 24", 32", 46", or 60"
- 110-277V auto-sensing water-resistant power supply
- Includes all mounting hardware and 10' cable
- Lifetime warranty on all parts except lamps
- Can be configured for single pass or recirculation
- Optional control center with BMS integration

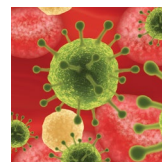
BENEFITS

- Improves Indoor Air Quality (IAQ)
- Complements filtration
- Single pass Kills up to 99.9% of microorganisms
- Effective chemical-free air disinfection
- Cost effective



Airborne Duct System in commercial AHU with Tubular Rack System for coil disinfection

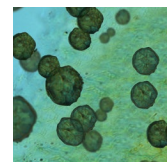
ADS STERILIZES AIRBORNE BIOLOGICAL PATHOGENS



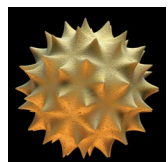
VIRUSES



BACTERIA



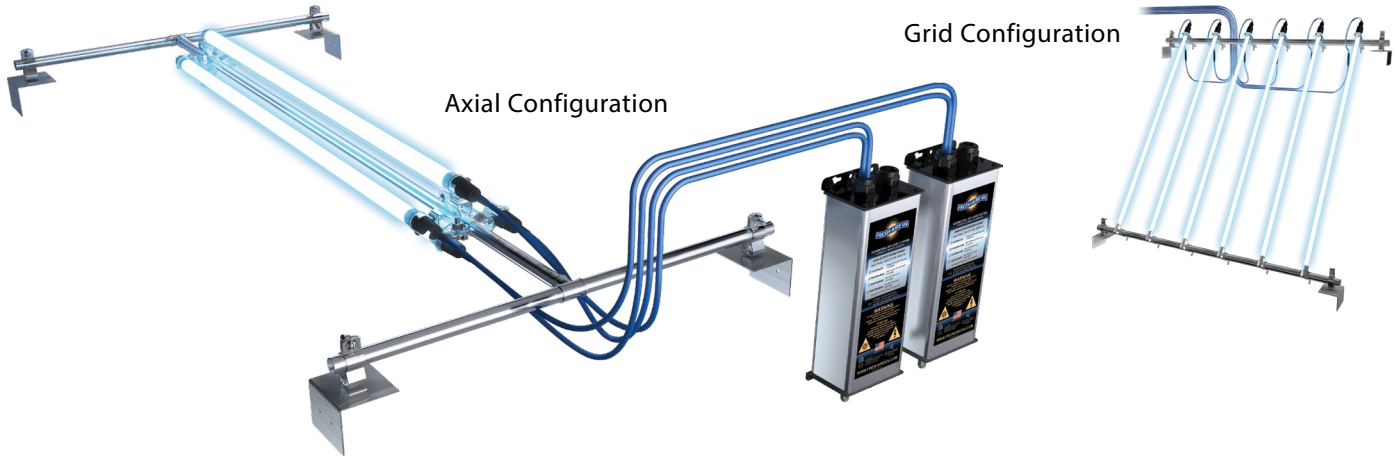
MOLD



ALLERGENS

ADS

AIRBORNE DISINFECTION SYSTEM



Fresh-Aire UV ADS Sizing Matrix & Multiple-Pass Airborne Disinfection

Tonnage or Duct Size or CFM		Air Disinfection	ADS Model	Qty	Configuration	BlueCalc Report**	
5 Ton	20 x 14	2000	Recirculation	TUVC-ADS-224 D -HO	1	Axial	View PDF
			Single Pass	TUVC-ADS-246 Q -HO	1	Axial	View PDF
7.5 Ton	20 x 18	3000	Recirculation	TUVC-ADS-224 D -HO	1	Axial	View PDF
			Single Pass	TUVC-ADS-246 Q -HO	1	Axial	View PDF
10 Ton	24 x 20	4000	Recirculation	TUVC-ADS-224 D -HO	1	Axial	View PDF
			Single Pass	TUVC-ADS-260 Q -HO	1	Axial	View PDF
15 Ton	26 x 24	6000	Recirculation	TUVC-ADS-232 D -HO	1	Axial	View PDF
			Single Pass	TUVC-ADS-260 H -HO	1	Axial	View PDF
20 Ton	32 x 26	8000	Recirculation	TUVC-ADS-246 D -HO	1	Axial	View PDF
			Single Pass	TUVC-ADS-260 H -HO	1	Axial	View PDF
25 Ton	26 x 28	10000	Recirculation	TUVC-ADS-246 D -HO	1	Axial	View PDF
			Single Pass	TUVC-ADS-260 H -HO	1	Axial	View PDF
30 Ton	38 x 30	12000	Recirculation	TUVC-ADS-260 D -HO	1	Axial	View PDF
			Single Pass	TUVC-ADS-260 Q -HO	2	Axial	View PDF
50 Ton	44 x 38	2000	Recirculation	TUVC-ADS-260 D -HO	1	Axial	View PDF
			Single Pass	TUVC-ADS-260 H -HO	2	Axial	View PDF

ADS Model Example: ADS-224**D**-HO: **2** = 2 year lamp | **24** = lamp length | **D** = 2 lamps (**Q** = 4, **H** = 6) | HO = High-Output

**BlueCalc report is for reference only. Contact Fresh-Aire UV for detailed report.



Design it Right

Our free BlueCalc™ service/software makes system configuration & ROI estimation easy.

ADS

AIRBORNE DISINFECTION SYSTEM



KIT INCLUDES	POWER SUPPLY DIMENSIONS
Remote power supply, 10' lamp cables, 6' power cord, UV lamp, mounting hardware, cable strain relief, view port, 36" x 0.5" EMT conduit 4 pieces	13"L x 3.75"W x 2.5"H

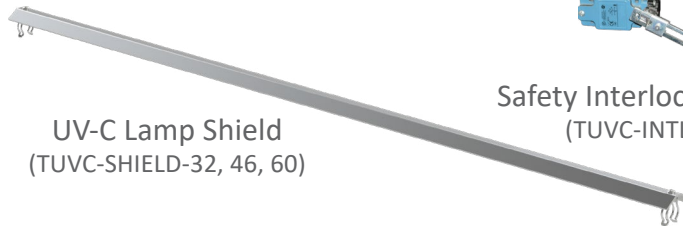
KIT PART #	LAMP DESCRIPTION*	LAMP PART #	POWER SUPPLY	POWER SUPPLY CE
<input type="checkbox"/> TUVCL-218HO	24" 18000 hrs, high output, 2 lamps	TUVCL-218HO	TUVCPS-H32D	TUVCPS-H32D-CE
<input type="checkbox"/> TUVCL-218HO	24" 18000 hrs, high output, 4 lamps	TUVCL-218HO	TUVCPS-H32D x2	TUVCPS-H32D-CE x2
<input type="checkbox"/> TUVCL-218HO	24" 18000 hrs, high output, 6 lamps	TUVCL-218HO	TUVCPS-H32D x3	TUVCPS-H32D-CE x3
<input type="checkbox"/> TUVCL-224HO	24" 18000 hrs, high output, 2 lamps	TUVCL-224HO	TUVCPS-H32D	TUVCPS-H32D-CE
<input type="checkbox"/> TUVCL-224HO	24" 18000 hrs, high output, 4 lamps	TUVCL-224HO	TUVCPS-H32D x2	TUVCPS-H32D-CE x2
<input type="checkbox"/> TUVCL-224HO	24" 18000 hrs, high output, 6 lamps	TUVCL-224HO	TUVCPS-H32D x3	TUVCPS-H32D-CE x3
<input type="checkbox"/> TUVCL-232HO	32" 18000 hrs, high output, 2 lamps	TUVCL-232HO	TUVCPS-H32D	TUVCPS-H32D-CE
<input type="checkbox"/> TUVCL-232HO	32" 18000 hrs, high output, 4 lamps	TUVCL-232HO	TUVCPS-H32D x2	TUVCPS-H32D-CE x2
<input type="checkbox"/> TUVCL-232HO	32" 18000 hrs, high output, 6 lamps	TUVCL-232HO	TUVCPS-H32D x3	TUVCPS-H32D-CE x3
<input type="checkbox"/> TUVCL-246HO	46" 18000 hrs, high output, 2 lamps	TUVCL-246HO	TUVCPS-H46D	TUVCPS-H46D-CE
<input type="checkbox"/> TUVCL-246HO	46" 18000 hrs, high output, 4 lamps	TUVCL-246HO	TUVCPS-H46D x2	TUVCPS-H46D-CE x2
<input type="checkbox"/> TUVCL-246HO	46" 18000 hrs, high output, 6 lamps	TUVCL-246HO	TUVCPS-H46D x3	TUVCPS-H46D-CE x3
<input type="checkbox"/> TUVCL-260HO	60" 18000 hrs, high output, 2 lamps	TUVCL-260HO	TUVCPS-H60D	TUVCPS-H60D-CE
<input type="checkbox"/> TUVCL-260HO	60" 18000 hrs, high output, 4 lamps	TUVCL-260HO	TUVCPS-H60D x2	TUVCPS-H60D-CE x2
<input type="checkbox"/> TUVCL-260HO	60" 18000 hrs, high output, 6 lamps	TUVCL-260HO	TUVCPS-H60D x3	TUVCPS-H60D-CE x3

*TEFLON encapsulated UVC lamps available.



CE For CE compliant parts add -CE to the part number Example: TUVCL-232D-HO-CE

Commercial Series Accessories [View PDF](#)



WWW.FRESH-AIREUV.COM



SALES@FRESH-AIREUV.COM

800-741-1195